

2024

FACTS + FIGURES



BROWN
Division of Biology
and Medicine



Mukesh K. Jain, MD

Senior Vice President for Health Affairs
Dean of Medicine and Biological Sciences

THE DIVISION OF BIOLOGY AND MEDICINE

By the **Numbers**

On campus, in the affiliated hospitals, and in our community, our faculty, students, and staff are hard at work, unified in their mission to advance knowledge and the health and well-being of people and planet.

These figures tell the story of the growth and development happening at Brown.

Division of Biology and

FACULTY

149

biology faculty

597

medical academic
faculty

1,865

medical clinical
faculty



\$45
million

from the state to create the Rhode Island Life Sciences Hub, a quasi-public agency intended to spur medical and scientific breakthroughs. Its governing board includes Dean Jain and other Brown leaders.

Medicine

BASIC SCIENCE DEPARTMENTS

- Ecology, Evolution, and Organismal Biology
- Molecular Biology, Cell Biology, and Biochemistry
- Molecular Microbiology and Immunology
- Neuroscience

MEDICAL DEPARTMENTS

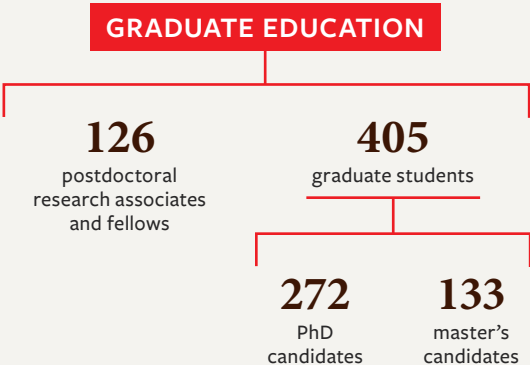
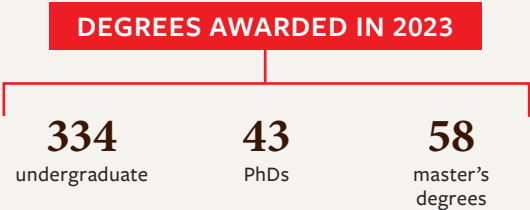
- Anesthesiology
- Dermatology
- Diagnostic Imaging
- Emergency Medicine
- Family Medicine
- Medicine
- Neurology
- Neurosurgery
- Obstetrics and Gynecology
- Orthopaedics
- Pediatrics
- Psychiatry and Human Behavior
- Radiation Oncology
- Surgery

HYBRID

(basic science and clinical medicine)

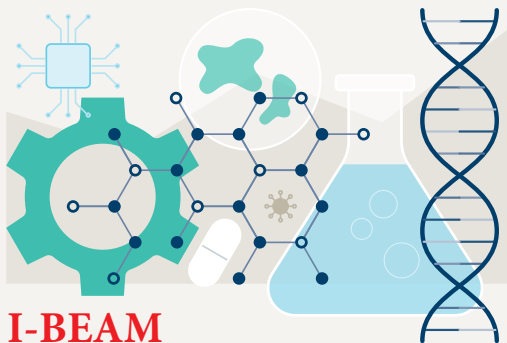
- Medical Science
- Pathology and Laboratory Medicine

Program in Biology



GRADUATE PROGRAMS

- Biomedical Engineering
- Biotechnology
- Computational Biology
- Ecology, Evolution, and Organismal Biology
- Molecular Biology, Cell Biology, and Biochemistry
- Neuroscience
- Pathobiology
- Therapeutic Sciences



I-BEAM

Brown's new Institute for Biology, Engineering, and Medicine brings together campus and clinical researchers to translate cutting-edge science into diagnostics, therapies, and devices for patients.

Warren Alpert Medical

UNDERGRADUATE MEDICAL EDUCATION

600

medical students

135

MDs awarded in 2023

GRADUATE MEDICAL EDUCATION

926

residents

28

residency
programs

355

fellows

77

fellowship
programs

GATEWAYS

32

students

32

master's
degrees
awarded
in 2023

MEDICAL PHYSICS

3

students

3

master's
degrees
awarded
in 2023

School

DEGREE PROGRAMS

- Program in Liberal Medical Education (AB or ScB/MD)
- Primary Care-Population Medicine Program (MD/ScM)
- Gateways to Medicine, Health Care, and Research Master of Science in Medical Sciences (ScM)
- Medical Physics (ScM)
- MD/PhD
- MD/MPH



\$395
million

invested in the Jewelry District of Providence—where Brown will also build a 300,000 sq.ft. Integrated Life Sciences Building in the coming years—to support new wet lab space at the Wexford Science & Technology Center and the new State Health Laboratories.

Hospitals

HOSPITALS

8

teaching
affiliates

serving

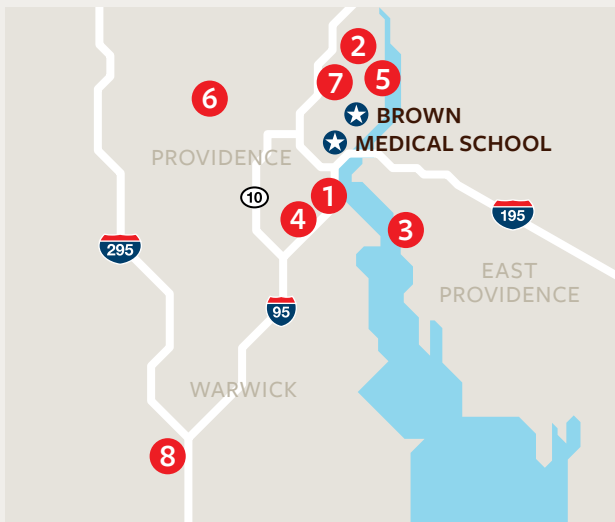
1.6M

people of diverse
backgrounds



\$17
million

awarded to Daphne Koinis-Mitchell, PhD, professor of psychiatry and human behavior and of pediatrics, and Viren D'Sa, MD, professor of pediatrics, by the NIH to study the impact of early life exposures on child physical health and neurodevelopment.



1. Rhode Island Hospital (a Level 1 trauma center) and Hasbro Children's Hospital
2. The Miriam Hospital
3. Emma Pendleton Bradley Hospital (pediatric psychiatric)
4. Women & Infants Hospital
5. Butler Hospital (adult psychiatric)
6. Providence VA Health Care
7. HopeHealth
8. Kent Hospital

\$2.1 *million*

awarded to faculty through Brown
Biomedical Innovations to Impact
(BBII) to support the development
of early-stage technology or
therapies discovered at Brown.

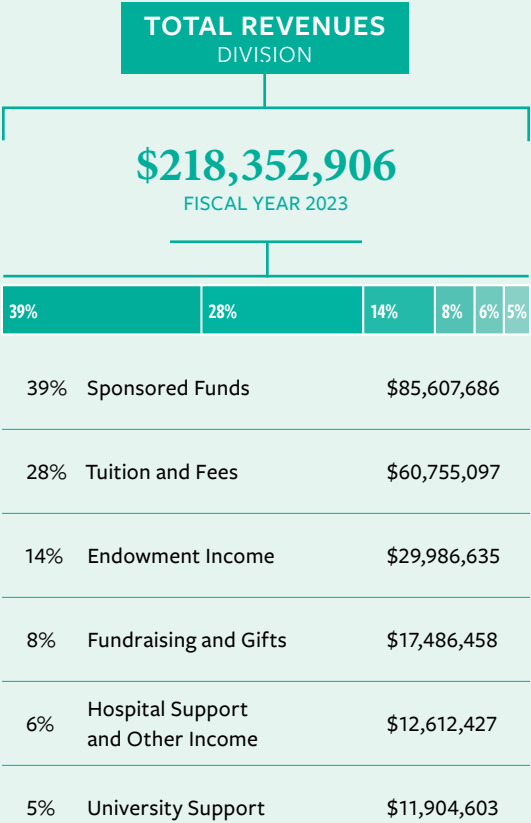


Financials

The following financial data are for the fiscal year ending June 30, 2023.

FY'23 Total Division Endowment	\$808,345,470
FY'23 Total Sponsored Activity (Campus and Affiliated Hospitals)	\$500,517,767
Total University Sponsored Activity	\$284,534,000
Division of Biology and Medicine	\$85,607,686
Brown, excluding Division	\$198,926,314
Total Affiliated Hospital Sponsored Activity	\$215,983,767
Lifespan (Rhode Island Hospital, The Miriam Hospital, Bradley Hospital)	\$144,093,303
Care New England (Women & Infants Hospital, Kent Hospital, Butler Hospital)	\$46,527,810
Providence VA Health Care	\$25,362,654

Revenues and expenses



TOTAL EXPENSES DIVISION

\$217,279,517

FISCAL YEAR 2023

37%

29%

16%

10%

8%

37% Academic Departments

\$79,343,397

29% Sponsored Funds

\$63,841,006

16% Financial Aid

\$34,770,566

10% Facilities

\$20,908,275

8% Admin and Other Costs

\$18,416,273

Philanthropy

Philanthropy makes it possible to carry out the Division's educational and research missions. The generosity of donors resulted in a number of new gifts in fiscal year 2023.

\$36,250,604

New gifts
and pledges

\$1,317,567

Brown Medical
Annual Fund

Campaign Update

BrownTogether, the most ambitious fundraising campaign in the institution's history, continues to provide tremendous support for research, faculty, and medical education. Of the campaign's \$4 billion goal, more than \$300 million is earmarked for the Division of Biology and Medicine. As of June 30, 2023, donors have generously given \$332 million.

To learn more about supporting the Division of Biology and Medicine, please visit giving.brown.edu/biomed



BROWN TOGETHER

\$9.2
million

from the NIH will provide continued support for the Providence/Boston Center for AIDS Research's mission to reduce the impact of HIV on vulnerable populations.



Lifespan • Brown • Boston University • Boston Medical Center

Leadership

Mukesh K. Jain, MD

Senior Vice President for Health Affairs
Dean of Medicine and Biological Sciences

Cailie Burns

Associate Dean for Biomedical Advancement

Michele G. Cyr, MD

Senior Associate Dean for Academic Affairs

Kimberly A. Galligan, MBA

Vice President for Clinical Affairs and Strategy
and Chief Operating Officer

B. Star Hampton, MD

Senior Associate Dean for Medical Education

Patricia Poitevien, MD, MSc

Senior Associate Dean for Diversity, Equity,
and Inclusion

Thomas Roberts, PhD

Senior Associate Dean for the Program in Biology

Sharon I. Rounds, MD

Associate Dean for Translational Science

Katherine F. Smith, PhD

Senior Associate Dean of Biology Education



Brown University

Division of Biology and Medicine

Box G-A1

Providence, RI 02912, USA

401-863-3330

Office_of_Biomed_Communications@brown.edu

biomedical.brown.edu

Follow us



[linkedin.com/school/warrenalpertmedicalschoo/](https://www.linkedin.com/school/warrenalpertmedicalschoo/)



@alpertmedicalschoo/



facebook.com/BrownMedicine



@BrownMedicine

**Scan the QR code to access
all of our social media links**

